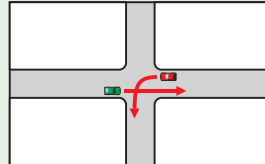


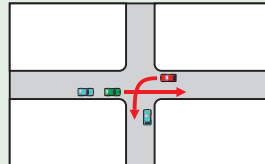
# What is Level of Service?

## Intersection (Based on vehicle seconds of delay)

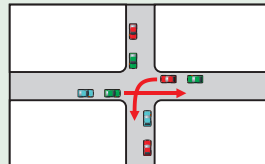
Minimal or no vehicle delay



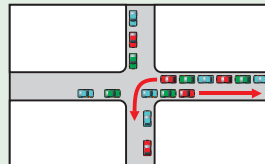
Slight delay to vehicles



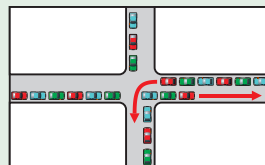
Moderate vehicle delays, traffic flow remains stable



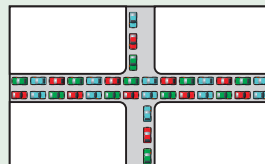
More extensive delays at intersections



Long queues create lengthy delays



Severe delays and congestion



**A**

**B**

**C**

**D**

**E**

**F**

## Roadway (Ratings)



Best condition with free-flow operations



Reasonably free-flow operations



Constrained constant flow below speed limits



Declining speeds and congestion, approaching unstable flow



Unstable flow (full capacity)



Worst conditions with heavy congestion, significant delays, stop-and-go-traffic, traffic demand exceeds capacity